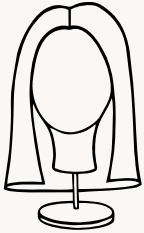


# Elly-K

## Human Hair Wigs

Visit [www.elly-k.com.au](http://www.elly-k.com.au) for all your wig care essentials

# Wig Care Essentials



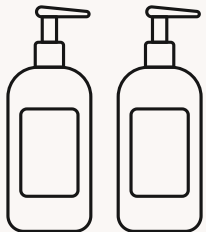
### 01 -Preparation

Secure your wig onto a polyfoam head using fine needles (avoiding the lace front). Gently brush with a wide-tooth wig comb to remove tangles.



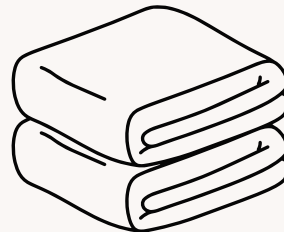
### 02- Shampooing

Wet the wig under lukewarm running water. Apply a small amount of Ellen Wille Human Hair Shampoo and gently work it through the strands from root to tip without scrubbing. Rinse thoroughly.



### 03- Conditioning

Apply the Human Hair Balm for added softness and silkiness. Let it sit before rinsing with lukewarm water. For extra hydration, use the Care 'n Repair Conditioner, which repairs and protects the hair. Every 3–4 washes, use the HH Intensive Recovery Mask to deeply nourish & restore brilliance. Leave it in for 5–10 minutes before rinsing.



### 04 - Drying & Styling

Avoid brushing when wet. Pat dry with a towel and allow the wig to air dry on a wig stand. Once semi-dry, use Ellen Wille's Anti-Static Spray for protection and smoothness before styling. Just a couple of sprays on the strand is needed.

**NOTES:** Do not pull the wig from the polyhead while wet, as this will pull the hair through the cap. Dry with a hairdryer on a polyhead on medium heat until the knots at the base of the wig are dry. Use the hair straighteners at a heat no higher than 180 degrees Celsius when the hair is dry.